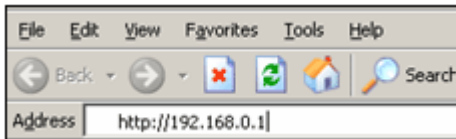


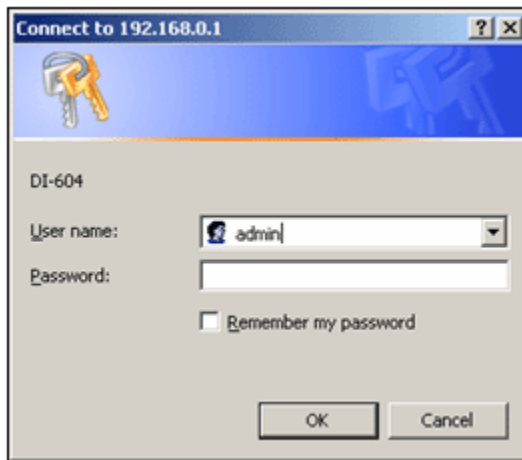
D-Link PPPoE Configuration

These steps will help you configure your D-Link Router to PPPoE for CALEA compliance. You need to do this **ONLY** on your router, not every computer. Once you have your router configured, that is all you need to do! So, lets get started!

1. Open up your Web Browser. In the address bar, type in **192.168.0.1**. Press Enter.



2. You will now be prompted for your username and password. If you have configured a username and password for your router, enter it now. If you have not, type in **admin** in the username field, and leave the password blank.



3. The main menu of the router will now be displayed. Click **ONCE** on the WAN button.



4. In the WAN menu, choose the radio button **PPPoE**

WAN Settings
Please select the appropriate option to connect to your ISP.

<input type="radio"/> Dynamic IP Address	Choose this option to obtain an IP address automatically from your ISP. (For most Cable modem users)
<input type="radio"/> Static IP Address	Choose this option to set static IP information provided to you by your ISP.
<input checked="" type="radio"/> PPPoE	Choose this option if your ISP uses PPPoE. (For most DSL users)
<input type="radio"/> Others	PPTP , BigPond Cable , L2TP and Tella.

5. This will cause a new menu to come up. The **PPP over Ethernet** menu will now be displayed. You will need to enter the **Connection Username** and **Password**. You will also need to make sure the **Auto-Reconnect is Enabled**.

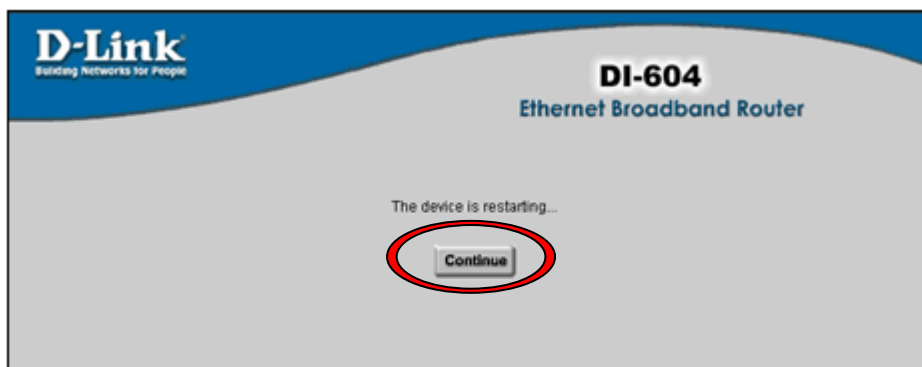
PPP over Ethernet

Dynamic PPPoE Static IP

User Name	<input type="text" value="username"/>	Your Username is your Triotel e-mail address
Password	<input type="password" value="*****"/>	Your password is your Triotel e-mail password
Retype Password	<input type="password" value="*****"/>	
Service Name	<input type="text" value=""/>	The Service Name is Triotel.net
IP Address	<input type="text" value="0.0.0.0"/>	
Primary DNS Address	<input type="text" value="0.0.0.0"/>	
Secondary DNS Address	<input type="text" value="0.0.0.0"/>	
Maximum Idle Time	<input type="text" value="0"/> Minutes	
MTU	<input type="text" value="1492"/>	
Auto-reconnect	<input checked="" type="radio"/> Enabled <input type="radio"/> Disabled	

Apply Cancel Help

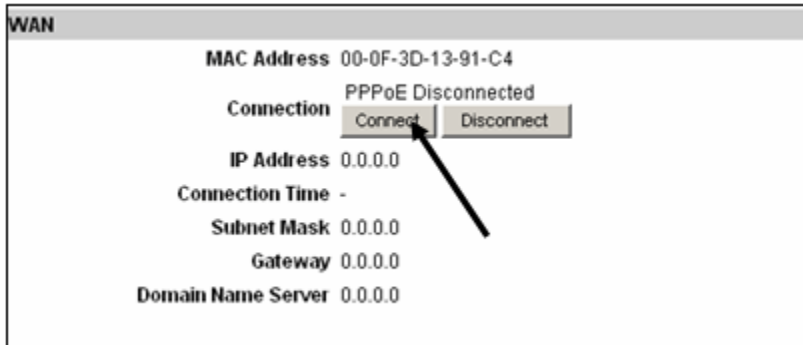
6. Next, Click **Apply** to save the changes. The router will now restart and you will need to click on **Continue** to finalize the changes.



7. The final step is to start-up the connection. Click on **Status** on the top menu.



8. On the WAN menu, you will need to click the **Connect** button. The router will then confirm that the connection with the Service is made and the connection state should change to **PPPoE Connected** .



9. Log out of the router, and restart Internet Explorer.

Congratulations!
You have now configured your D-Link router to PPPoE for CALEA compliance.

