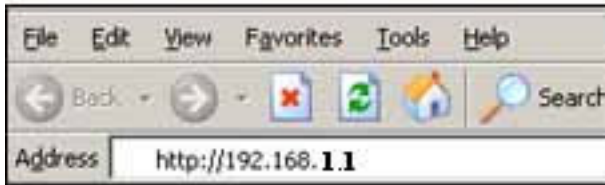
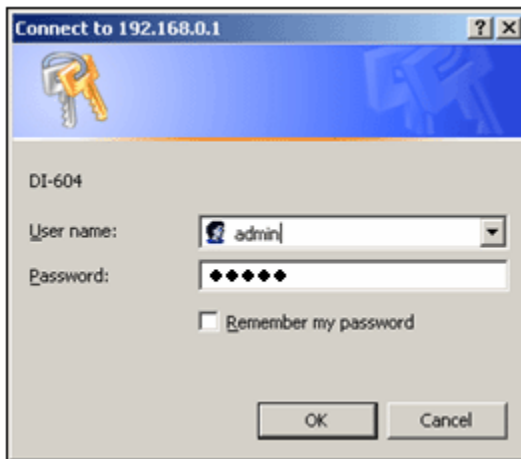


## Linksys Routers

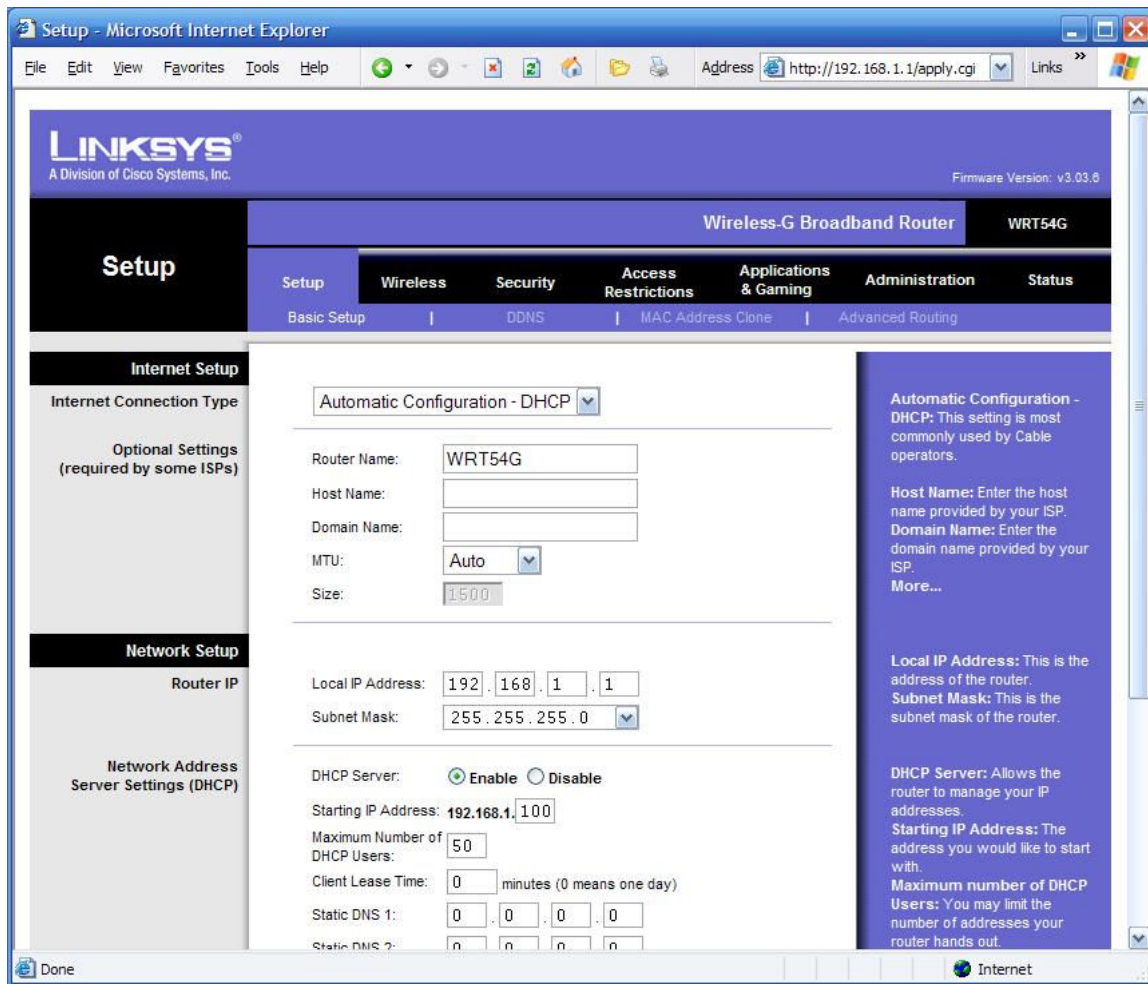
1. Open your Internet Browser. Type 192.168.1.1 in the address bar and hit enter



2. You will now be prompted for the username and password. If you have set up a username and password, enter it now. If you have not set up a username and password, enter admin as **both** the username *and* password.



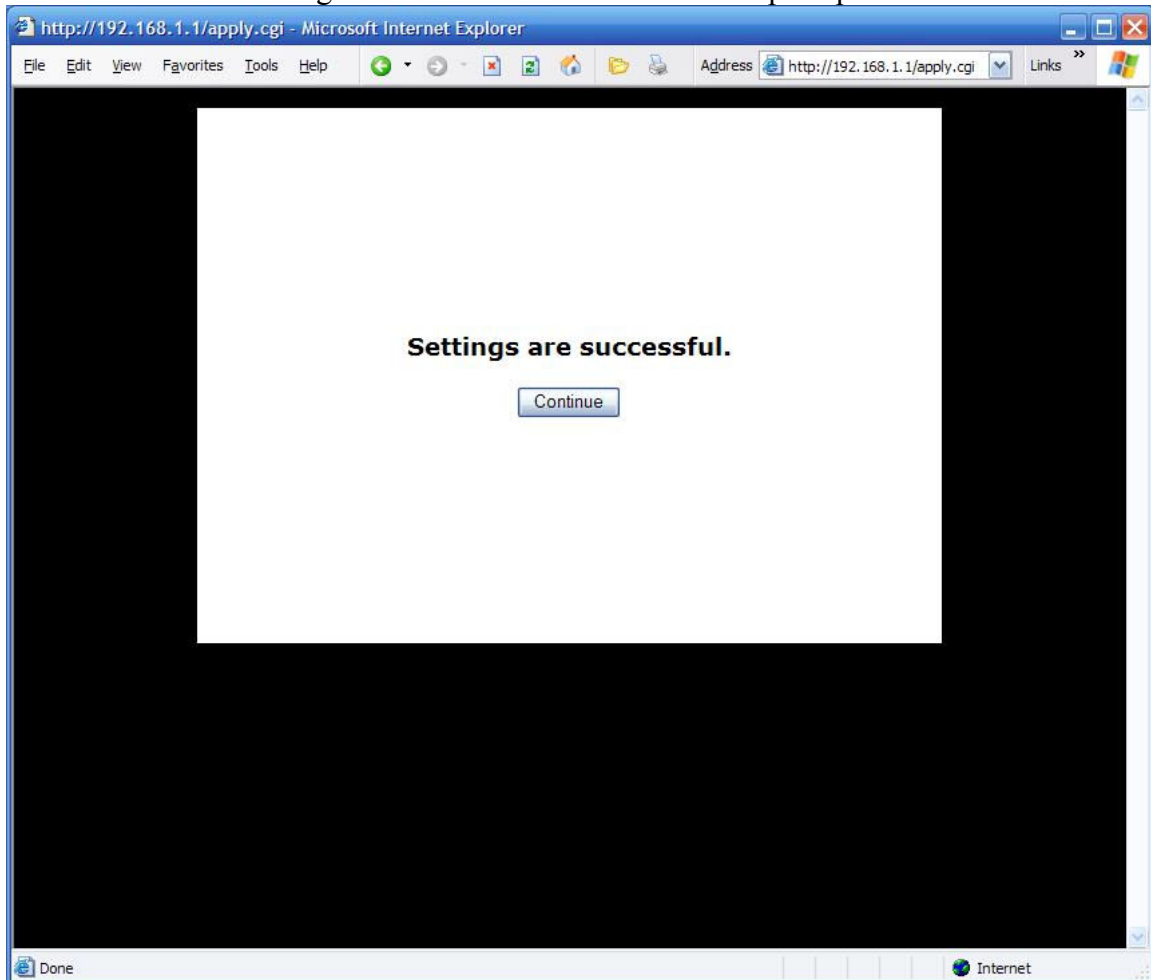
- Once you have logged in, you will see this Setup screen. If you have an older router, you will not see this screen but that is ok. What you need to do if you have an older router is click on the WAN link, then find where it says PPPoE. Then, enter in your information as it says with the following instructions.



4. First, under Internet Setup, change the setting from Automatic Configuration-DHCP in the drop down list to PPPoE.
  - a. Enter your Triotel e-mail username and password as your username and password.
  - b. Select Keep Alive: Redial Period instead of Connect on Demand: Max Idle Time and set it to 20 seconds
  - c. Leave the defaults for Router Name, Host Name, Domain Name and MTU.

The screenshot displays the Linksys WRT54G router's configuration interface. The browser window title is "Setup - Microsoft Internet Explorer" and the address bar shows "http://192.168.1.1/apply.cgi". The page header includes the Linksys logo and "A Division of Cisco Systems, Inc." with a firmware version of v3.03.6. The main navigation bar is titled "Wireless-G Broadband Router WRT54G" and includes tabs for "Setup", "Wireless", "Security", "Access Restrictions", "Applications & Gaming", "Administration", and "Status". The "Setup" tab is active, and the "Internet Setup" section is expanded. The "Internet Connection Type" is set to "PPPoE". The "User Name" field contains "user@gorge.net" and the "Password" field is masked with dots. The "Connect on Demand: Max Idle Time" is set to 5 minutes, and the "Keep Alive: Redial Period" is set to 20 seconds. The "Router Name" is "WRT54G", and the "Local IP Address" is "192.168.1.1" with a "Subnet Mask" of "255.255.255.0". The "DHCP Server" is set to "Enable". A "Starting IP Address" field is also present. On the right side, there are informational text boxes for PPPoE, Host Name, Domain Name, Local IP Address, and Subnet Mask.

5. Click on Save Settings. Press the continue button when prompted at this screen:



6. Log out of/close your Internet Browser. If everything was set up correctly, you should be able to get back onto the Internet after 10:00 a.m. on Wednesday

