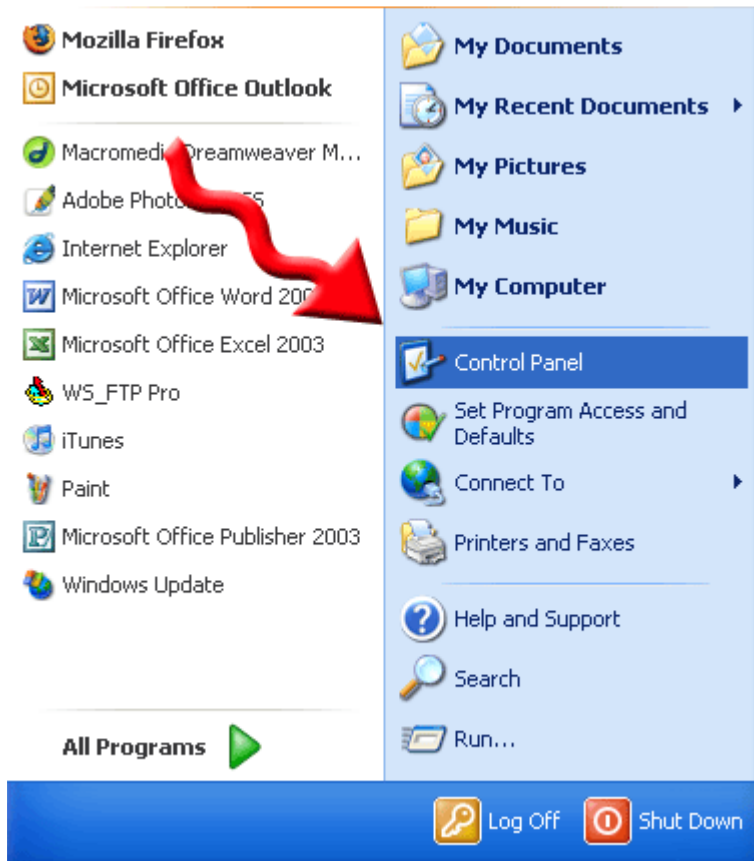


## PPPoE Authentication Procedures

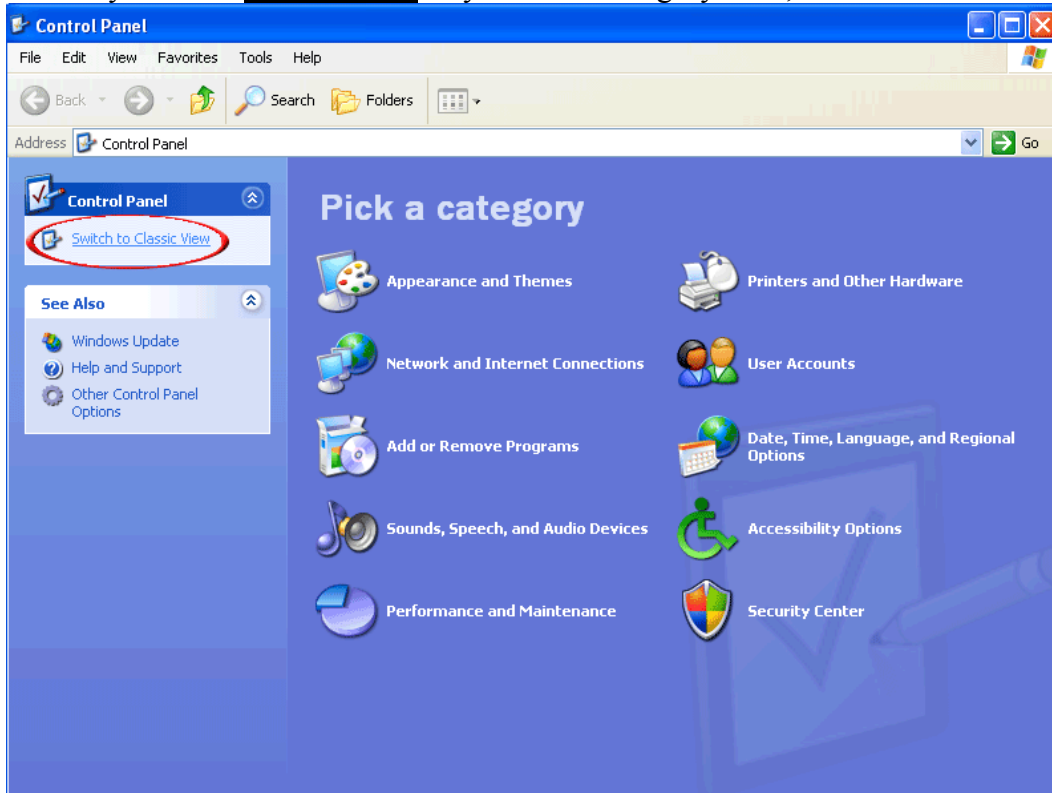
### Setting up PPPoE on Windows XP

#### **To Set up PPPoE on Windows XP:**

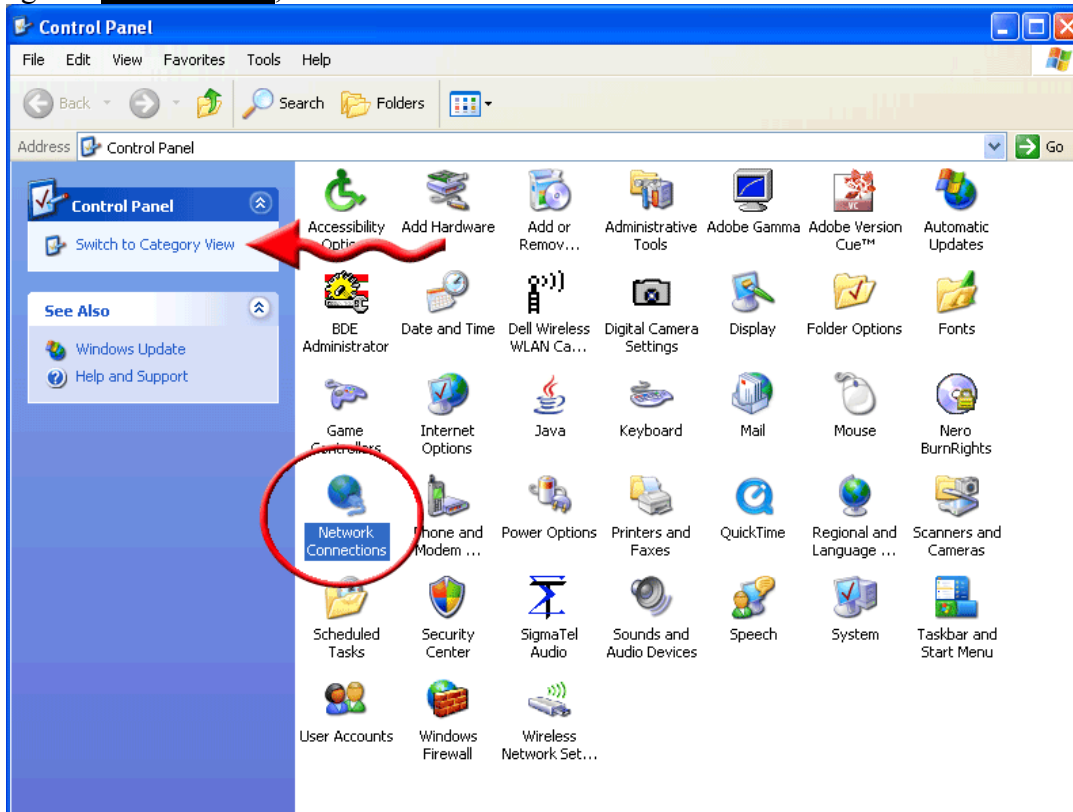
1. Click on “start” on the bottom right hand corner of your screen. Click on Control Panel



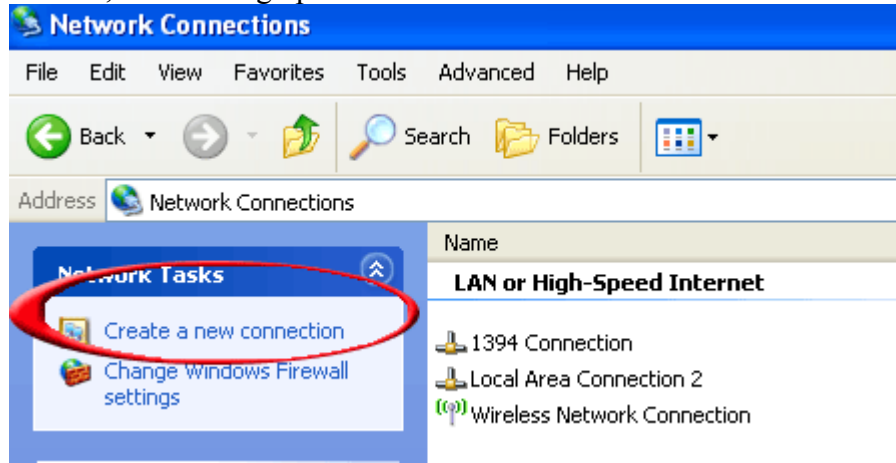
2. Make sure you are in **Classic View**. If you are in Category view, the screen will look like this:



In order to get to **Classic View**, click "Switch to Classic View". Your screen should now look like this



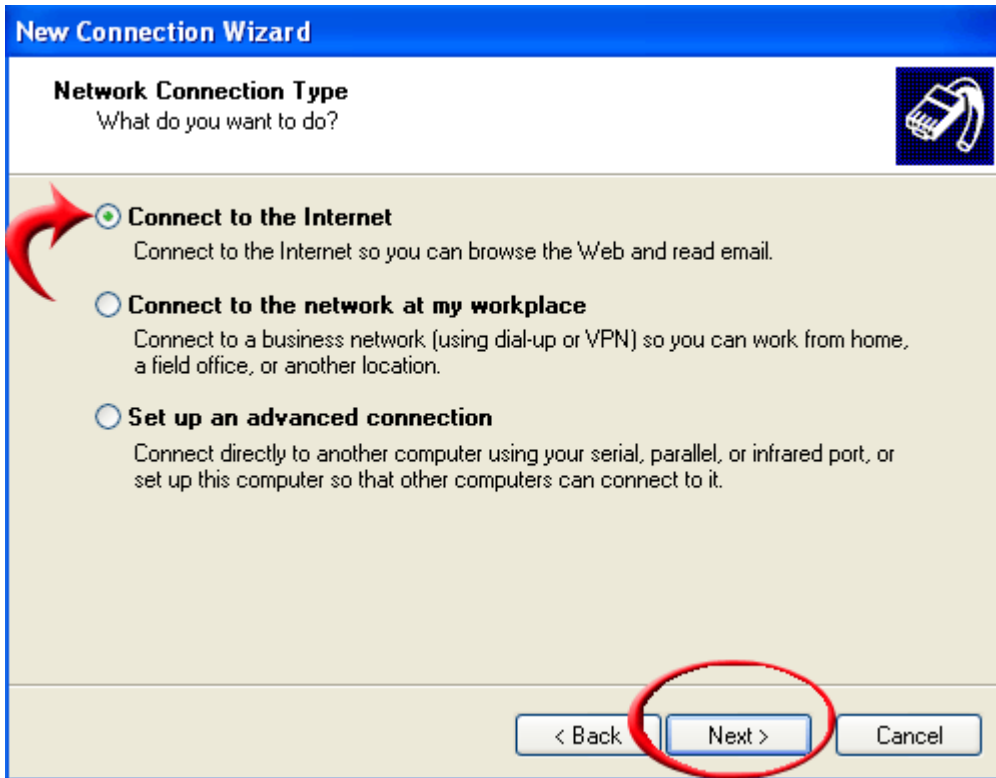
3. Now that you are in category view, double click on Network Connections (circled in red). If your screen does not exactly look like this, that is ok. Some people will see smaller icons, some people will see larger icons, some people will see them lined up top to bottom. Those are just different preferences for viewing files. All you have to do is find “Network Connections” and double click on that. Once you double click on Network Connections, it will bring up a new screen. Click on “Create a New Connection”



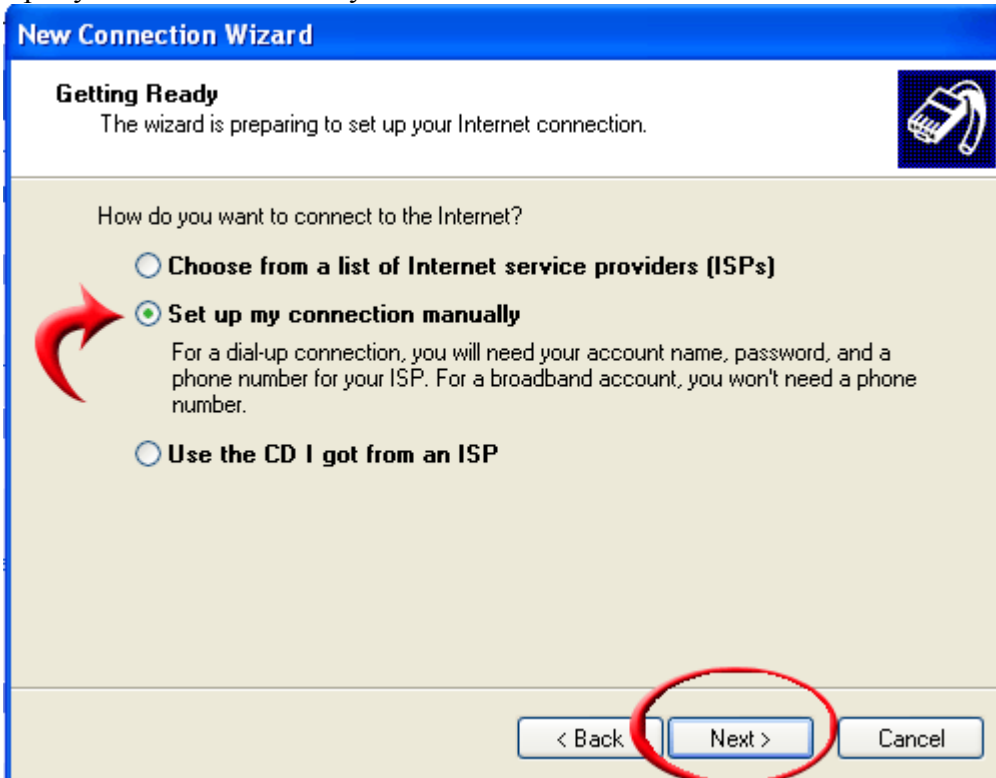
4. This will start a New Connection Wizard. This is a simple process that will set up your PPPoE connection. The following dialogue box will appear. Click Next.



5. Select “Connect to the Internet” and then click the “Next” button.



6. Select “Set up my connection manually” and click the “Next” button



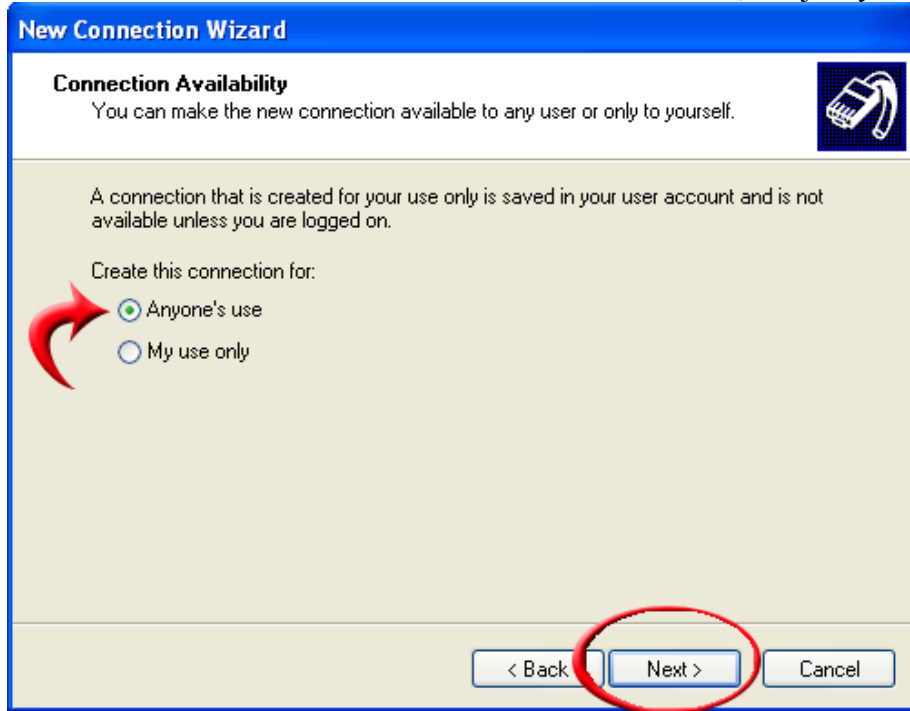
7. Select the second option, “Connect using a broadband connection that requires a user name and password”, then click on the “Next” button.

The screenshot shows the 'New Connection Wizard' dialog box with the title 'Internet Connection' and the question 'How do you want to connect to the Internet?'. There are three radio button options: 'Connect using a dial-up modem', 'Connect using a broadband connection that requires a user name and password' (which is selected and highlighted with a red arrow), and 'Connect using a broadband connection that is always on'. At the bottom, the 'Next >' button is circled in red.

8. Type “Triotel.net” into the “ISP Name” field, and then click the “Next” button

The screenshot shows the 'New Connection Wizard' dialog box with the title 'Connection Name' and the question 'What is the name of the service that provides your Internet connection?'. It prompts the user to 'Type the name of your ISP in the following box.' and shows an input field labeled 'ISP Name' containing the text 'Triotel.net', which is circled in red. Below the field, it says 'The name you type here will be the name of the connection you are creating.' At the bottom, the 'Next >' button is circled in red.

9. Make sure that you have “Anyone’s Use” selected, especially if you have different users set up in your XP. If it is not, you will have to make a new PPPoE for EVERY connection, not just yours.



10. Enter your username and password into the applicable fields. Your username is your e-mail address, “username@trietel.net” and your password is the password that you use to log into webmail. So, use your e-mail and password that you use to log into your webmail. Click “Next”.

**IMPORTANT!**

The two checkboxes *MUST* be checked! Look at the image below for an example



11. Check the box “Add a shortcut to this connection to my desktop” as in the example below, then click on the “Finish” button to complete the set up of your PPPoE connection.



Congratulations! Your connection has now been configured and is ready to use. Ensure your DSL modem is plugged in, then double click on the “Triotel.net” icon on your desktop, and then click “Connect”. Windows should then connect you to Triotel’s Internet. If you experience any problems, please contact us at 425-2238 or 611.