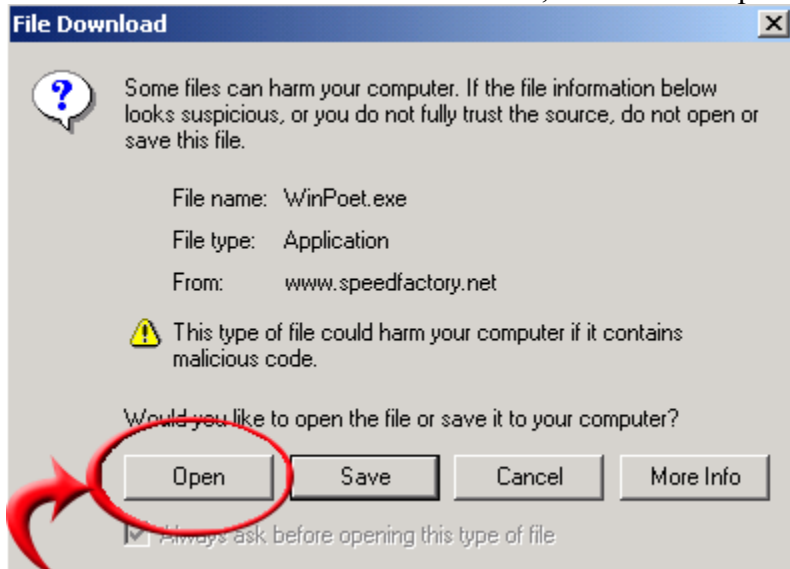


## Setting up PPPoE on Windows 98, 2000, ME, 2003/NT

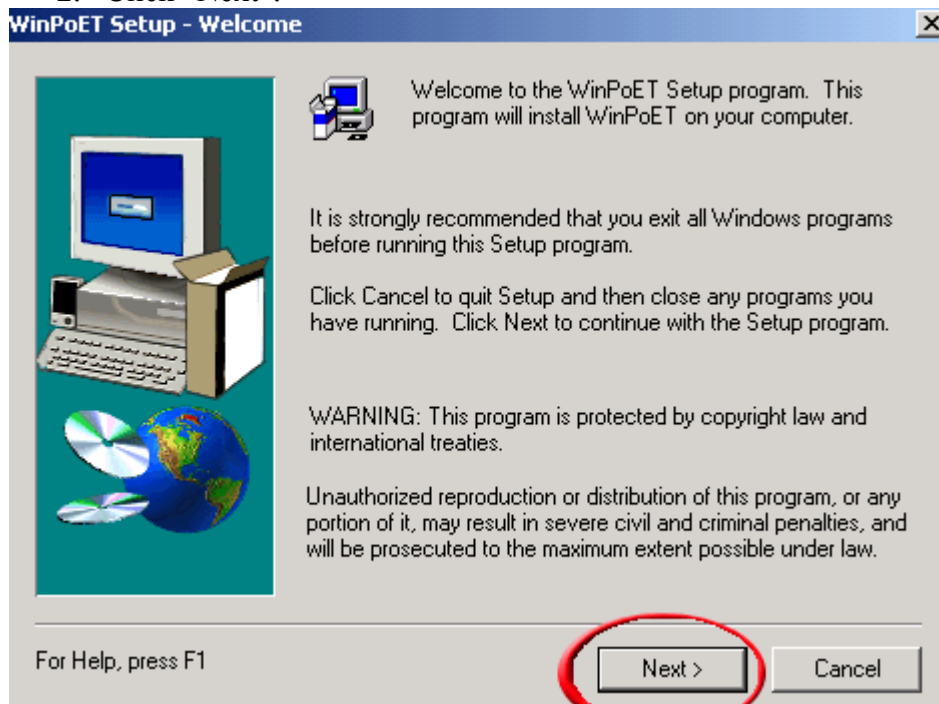
### **To Set up WinPoet:**

1. Click the link to download the file, then select “Open” from the dialogue box.

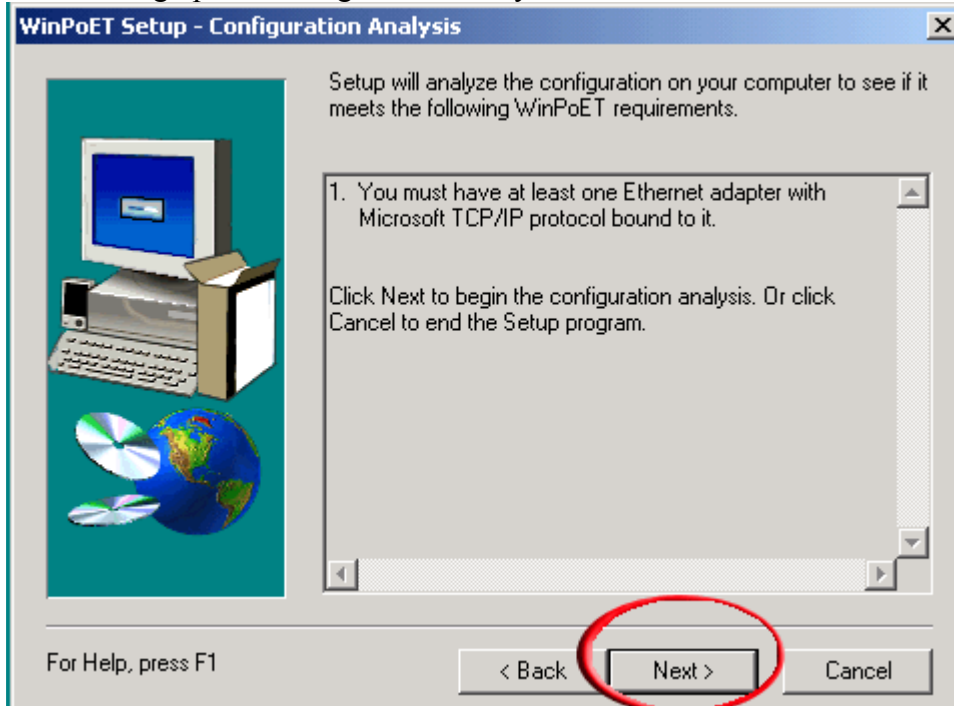


Wait for the installer to load, and it will automatically bring up the WinPoET setup.

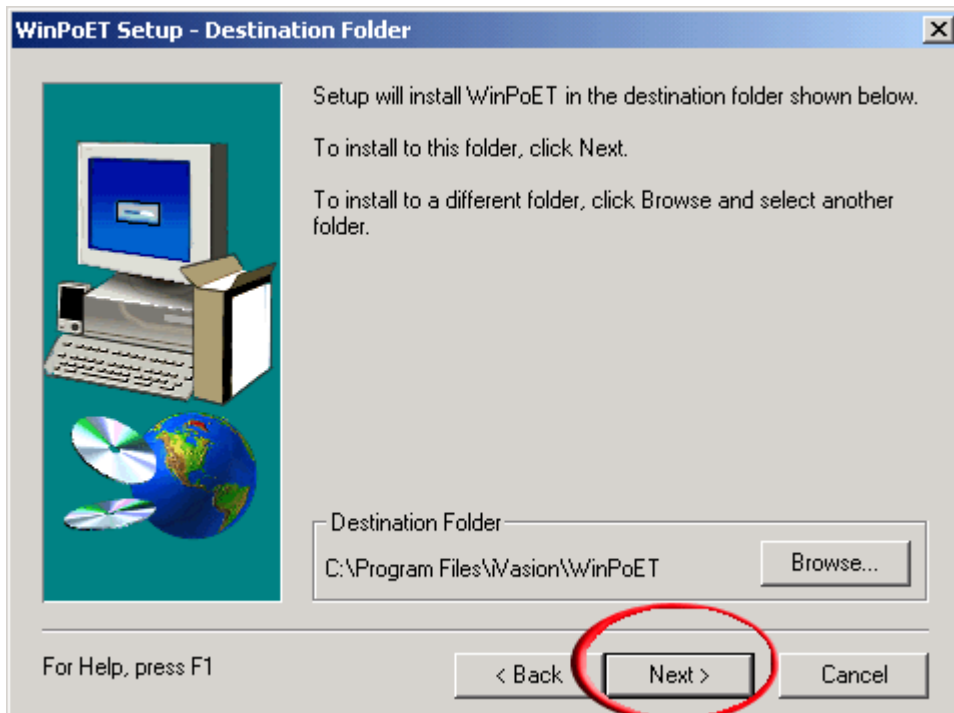
2. Click “Next”.



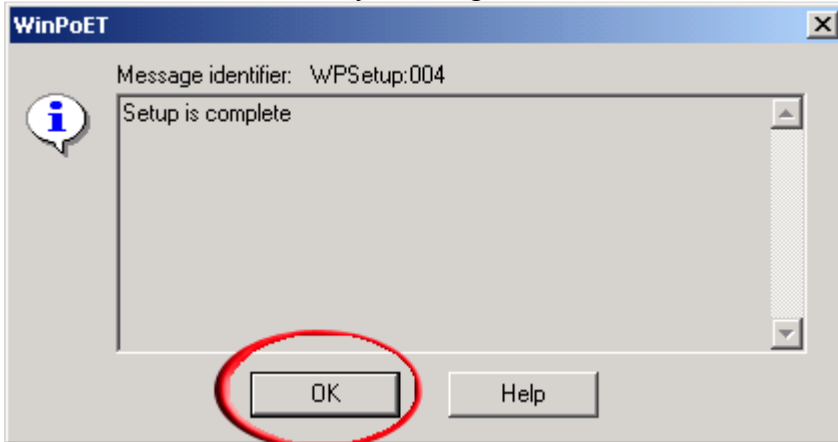
3. It will bring up a User Terms of Agreements. Click “Accept” and then it will bring up the Configuration Analysis. Click “Next”



4. Click “Next”



5. This will install WinPoET onto your computer. This is a necessary software program that will connect you through PPPoE for CALEA compliance. Once the installation is finished, you might be asked to reboot your computer. If you are, do so now. Otherwise, you will get a screen that will look like this:



6. Locate and double-click the WinPoet icon on your desktop. It will bring up this screen:



Type your username and password. Your username is your e-mail account, **username@triotel.net** and your password is the password you use to log into your triotel.net e-mail account. If you don't remember these, please call our office at 425-2238 or 611!

Congratulations!

You are now configured for PPPoE in accordance with CALEA compliance!